

Payout Units

www.leisureherrero.com



Parts for Standard Payout



Payout Slides

For single coin per pulse
Used on standard payout

Part no.	Description
C27-14	0.048" slide
C27-14-1	0.080" slide
C27-14-2	0.100" slide
C27-14-3	0.060" slide



Plunger Spring

Used on standard payout

Part no.	Description
C27-7	Spring standard



Payout Caps

All caps are colour coded for coin sizes

Part no.	Description
C27-2-1	Blue 19/21mm
C27-2-2	Red 24/26mm
C27-2-3	Blue 28/29mm
C27-2-4	Yellow 30/31mm
C27-2-5	Green 23/24mm
C27-2-6	Purple 22/23mm
C27-2-8	Brown 21/21.5mm

Coin Tubes

Straight tubes without cut-outs or formings.
Sold in lengths of 1 mtr.
Different sizes and lengths available upon request.

Part no.	Description
C27-10-24	Green tube for 24mm coins
C27-10-25	Red tube for 25mm coins
C27-10-29	Clear tube for 29mm coins



Solenoids

For standard payout unit

Part no.	Description
C27-11-3	Solenoid 50VAC
C27-11-14	Solenoid 24VDC

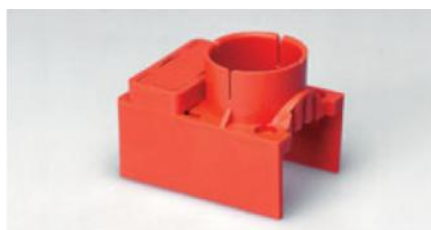
Parts for Compact Payout



Coils with Plunger

For compact payout unit

Part no.	Description
C42-15-3	Coil 48VAC
C42-15-14	Coil 24VAC



Payout Caps

For compact payout unit

Part no.	Description
C42-8-1	Orange
C42-8-2	Red
C42-8-3	Yellow
C42-8-6	Blue
C42-8-7	Brown
C42-8-8	Purple



Payout Slides

For single coin per pulse

Part no.	Description
CPBL311	0.060"
CPBL327	0.044"
CPBL383	0.080"



Mounting Spring

For level detector.
Will last much longer than the standard mounting rubbers.

Part no.	Description
22-2182	Mounting spring

Economical on space.

The compact payout can be used with AC or DC power supplies. Inductive high and low level sensing available.

These payouts are suitable for all coins between 17 and 30mm in diameter.

Features:

- Compact design
- Solenoids available in 50VAC and 24VDC
- Lower current consumption for DC operation
- Highly efficient solenoid and slide assembly
- Dispenses one coin per pulse

Applications:

AWP's - Vending



Part no.	Description
C42-1048-XX	Compact payout 48VAC
C42-1024-XX	Compact payout 24VDC



Coin Level Sensor

Part no.	Description
CLWC032	Level sensor for 35mm tubes
CLWC033	Level sensor for 32mm tubes



Coin level detector

Part no.	Description
22-2125	Coin level detector red
22-2126	Coin level detector grey
22-2126-1	Coin level detector beige



MK4



Money Controls

Universal Hopper MK4

With over 1.25 million units already supplied for applications in amusement, ticket, car-park, specialist vending and change machines, the field-proven reliability of the Universal Hopper is second to none and has made it the industry standard.

Features:

- Resistant to fraud, high-security.
- High capacity, space-efficient design.
- Optimum in-service time.
- Truly global.
- Minimal number of empty/refill cycles.
- ccTalk serial or standard parallel interface.
- Continuous agitation of coins to prevent jams.
- 24V.
- Coin dimensions: diameter 16-31mm, thickness 1-3.5mm.
- Standard coin capacity: £1 x 950.
- Special Euro build available.

Part no.	Description
C24MK4EMC	Hopper for coins 20/30mm
C24MK4-1	For coins smaller than 20mm

Universal Hopper MK4 Standard/Small Coins Version

Coin	Version	Part no.
€0.01	Small coins	C24MK4-1
0.02	Small coins	C24MK4-1
0.05	Small coins	C24MK4-1
0.10	Small coins	C24MK4-1
0.20	Standard	C24MK4
0.50	Standard	C24MK4
1.00	Standard	C24MK4
2.00	Standard	C24MK4

As above but immediate replacement for MK2 hoppers.
With "Cinch" plug.

Part no.	Description
C24MK4S	MK4 hopper with MK2 plug

Special version for:

€0.05 - €0.10 - €0.20 - €0.50 - €1.00 and €2.00

Part no.	Description
C24MK4E	Universal hopper "yellow" (please, specify build)

Universal Hopper Serial (CCTalk)

Part no.	Description
C24CCT	Universal hopper serial (please, specify build)

Money Controls



Compact Hopper

A secure, quick and reliable payout unit for a wide range of applications

- 8-10 coins paid out per second
- Resistant to fraud, high security
- Field-proven reliability, over 1 million units supplied worldwide
- Optimum in service time
- Euro build available
- ccTalk serial interface or standard parallel interface
- 12V or 24V operation
- range of modular components available to change the capacity, extend the coin ranges, configure the exit path and set level sensing.

Part no.	Description
C25XX	Compact hopper (please, specify build)
C25CCT	Compact hopper serial (please, specify build)



Exit Window P.C.B. Assy

Part no.	Description
CA24-6	Exit PCB



Hopper Port Blanc

Part no.	Description
C24-22	Hopper port blanc



Low Level Contact A

Part no.	Description
C24-29A	Low level contact A



Low Level Contact B

Part no.	Description
C24-29B	Low level contact B



P.C.B. Assembly for MK2/3

Part no.	Description
C24-37	P.C.B. assembly MK2
C24-37-1	P.C.B. assembly MK3



Track Plate

Red colour track plate.

Part no.	Description
C24-8-2	Reg. coins 20mm
C24-8-3	Small coins 16 - 20mm



Coin: 0.01 - 0.02 - 0.05 and 0.10
Use C24-8-3.

Coin: 0.20 - 0.50 - 1.00 and 2.00
Use C24-8-2.



Plug and Socket for MK2/MK4

Part no.	Description
C24-11	12-way plug
C24-11-1	12-way socket



Plug and Socket for MK3/MK4

Part no.	Description
C24-15	Plug (male)
C24-15-1	Socket (female)



Cam Shaft

Part no.	Description
C24-26	Cam shaft



Cam

Part no.	Description
C24-27	Cam



Drive Belt

Part no.	Description
C24-19	Drive belt



Long Cam

Part no.	Description
C24-28	Long cam



Idler Gear

Part no.	Description
C24-12	Idler gear



Output Gear

Part no.	Description
C24-16	Output gear



Intermediate Gear

Part no.	Description
C24-18	Intermediate gear



Pulley Gear

Part no.	Description
C24-17	Pulley gear



Escendo Escalator Hopper

Being the largest Casino Hopper manufacturer in Europe the market has high expectations from Suzo with its launch of an escalator hopper that solves most problems existing escalator hoppers have.

Nearly 5 years of development and two world wide patents (applications and granted) has resulted into this Escendo Hopper with its unique rotor system and brush track.

The patented rotor system ensures one-by-one coin entry into the brush track, eliminating shingling (overlapping coins) which mostly results in a coin jam.

Arriving into the track the coin is pushed towards the back plate by the patented brushes having the advantage of being totally insensitive for damaged or bend coins which often end up in a fatal error.

The brushes in the track are placed in a diagonal upward position easing the coin to pass upwards but stopping the coin to go down again: result low power consumption and less wearing parts.

The planetary gearbox system guarantees low power consumption and silent operation. (Optionally available on 12VDC)

Low maintenance and easy accessible are key words in the Escendo hopper, coin track is open on one side for visual inspection.

The combination of these features has resulted in a token and service friendly hopper with extremely high performance.

Features:

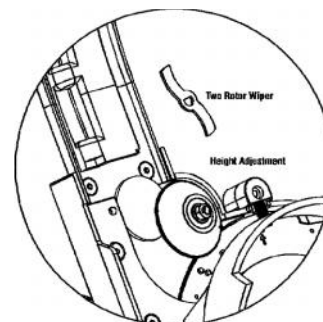
- High performance and reliability.
- Low maintenance and easy accessible.
- Planetary gearbox for low power consumption and silent operation.
- Easy to change denomination between 21-30mm or 30.1- 40mm.
- Choice of optical or induction sensors for coin read out.
- Customised cups and frames possible, equal to side pay-out hoppers from Suzo.
- Selection of control boards available.

Technical specifications:

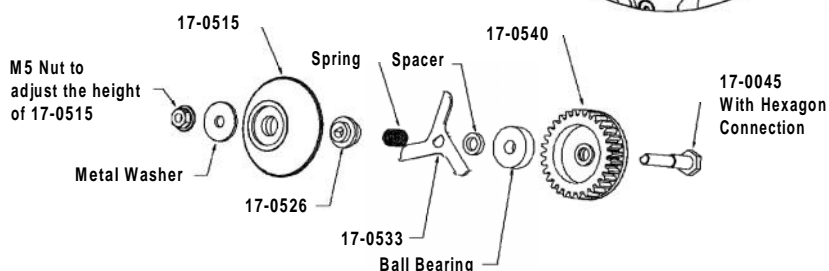
- Applicable coin size: diameter 21-40mm, thickness 1.5-3.2mm.
- On special request: coin size diameter 45mm.
- Pay out speed: 210 - 420 coins per minute depending coin size.
- Voltage 12 or 24VDC.
- Power consumption (current):
 12VDC nominal: 1Amp / peak 3.0Amp 24VDC nominal: 0.6Amp / peak: 2.5Amp
- Available in 3 heights:

Pay-out height	Overall height
485mm	537mm
535mm	587mm
585mm	637mm
- Counting method: Optical sensors with pulse mode and opto check.
- Pay out side: standard right, optional left hand side.
- Operating temperature: (0° - 60°C)

For full technical details,
 please ask for our technical manual.
 (XX please specify)



Rotor Assy



Part no.	Description
17-XXXXXX-XX	Escendo escalator hopper



Europe's largest Casino Hopper Manufacturer

excelTM hopper

Nearly 25 years of designing and manufacturing Casino Hoppers has resulted in this new product. Understanding the needs of both Casinos and Slot machine manufacturers has led to this extremely durable and World's most service friendly Casino hopper.

Features:

Planetary gearbox system provides the following advantages:

Maximum torque with minimal power consumption.

24V - 31 RMP load 6kg N-m 12V - 31 RMP load 5kg N-m

24V - 24 RMP load 12kg N-m 12V - 24 RPM load 11kg N-m

Standard supplied in 24VDC optional available in 12VDC.

Power consumption:

Unloaded Loaded Stall autoreverse

24VDC 0.25 Amp 0.50 Amp 1.5 Amp

12VDC 0.30 Amp 0.70 Amp 1.6 Amp

Silent operation.

Unique bayonet motor connection for easy motor replacement.

Extra features:

Indirect optic switch read out protected by dust and light cover.

Easy accessible coin exit.

Steel bearings offer stable disc rotation.

Customised frame and cup specifications possible.

All parts including pin and shelf wheels are 100% compatible with older generations STC hoppers.

Easy to integrate for manufacturers who use older generation STC Casino Hoppers.

Optionally available with wiring harness and AMP plug.

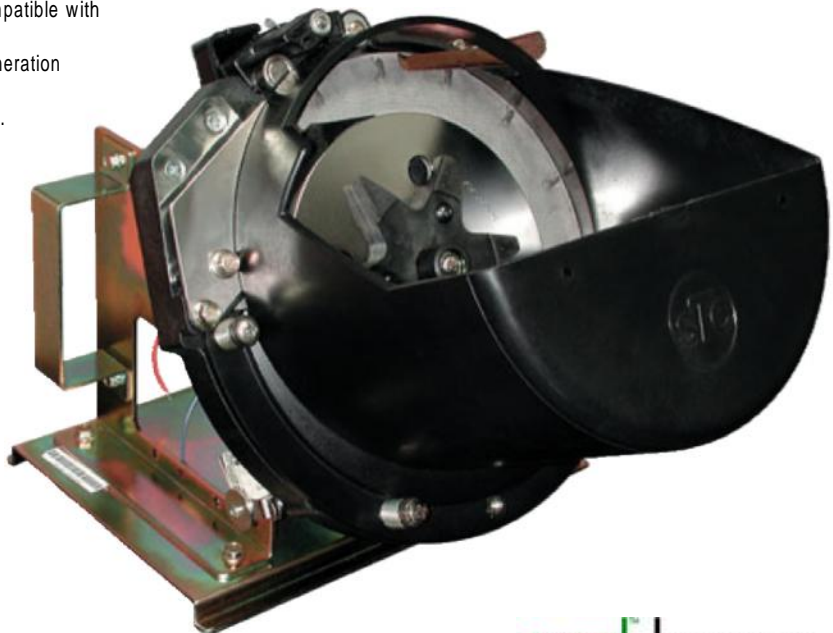
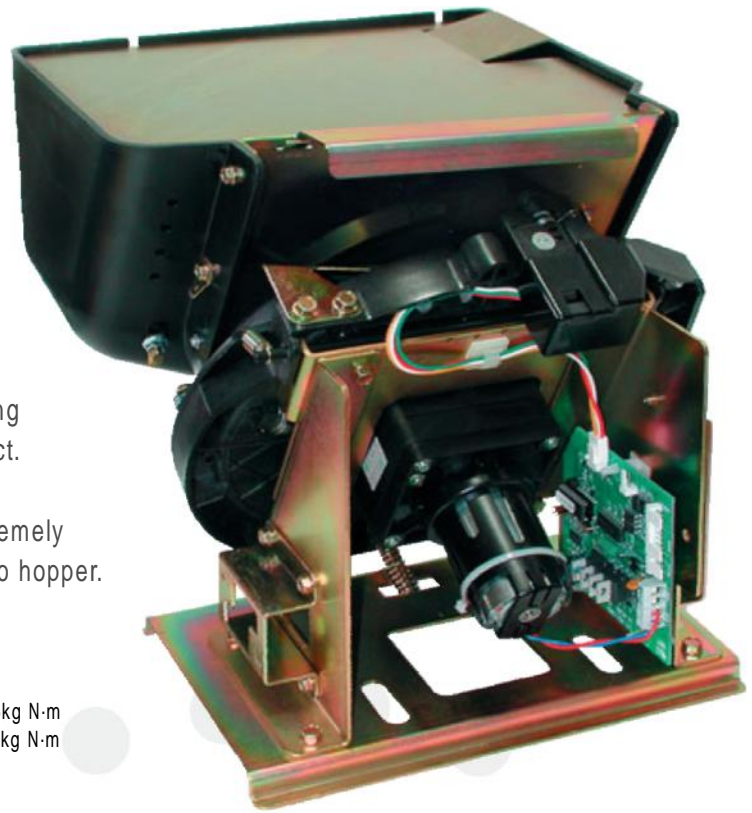
Competitively priced!

Modern look.

Payout speed 450 coins per minute (<31mm coins)

or with bigger size coins 275 coins per minute

(>31.1mm coins).



Part no.	Description
16-500X-XX	Excel casino hopper

* Specification required

excelTM hopper



Gold Series

The standard for
The Gaming Industry

Specifications:

Coin size: diameter 18-40mm.

Bowl capacity: 1000 coins (US 0.25c).

Pay out speed:

24VDC motor - 450 coins per minute (US 0.25c).

110VAC motor - 350 coins per minute (US 0.25c).

240VAC motor - 350 coins per minute (US 0.25c).

Counting system: hall effect switch or microswitch.

Adjustable switch actuates when a pre-determined number of coins (by weight) is in the cup.

(Optional with strobe pins)

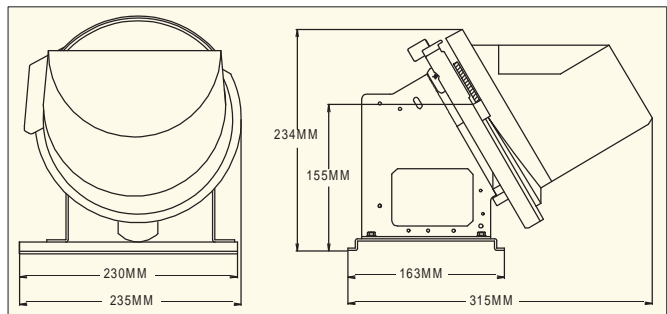
Optional: anti jam PCB for 24VDC motor.

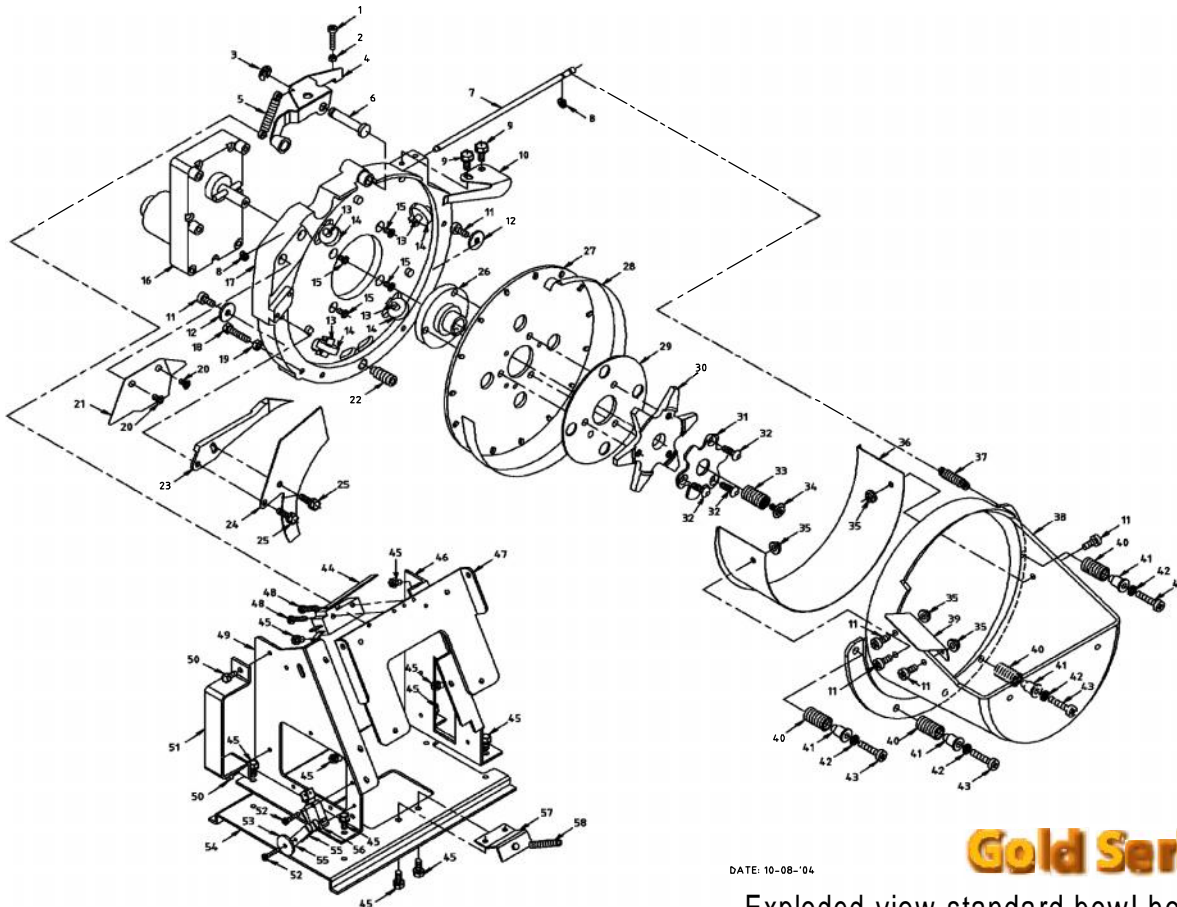
Optional: completely wired with AMP plug.

Standard Bowl Hopper

The Hopper with a long solid reputation for reliable coin/token pay-out, used in many casino machines around the world.

Part no.	Description
15-3004-XX	Standard bowl hopper 24VDC





DATE: 10-08-'04

Gold Series

Exploded view standard bowl hopper

Drawing No.	Part no.	Description	Pcs	Drawing No.	Part no.	Description	Pcs
1	140-020-220	M4x20 SCREW PHILL. PAN HD YELLOW	1				
2	1040-050	M4 NUT YELLOW ZINC	1	31	See part list G	METAL STAR SUPPORT AGITATOR	1
3	5070-181	7MM "E" WASHER (DIN 6799) BLACK	1	32	See part list H	M5 SCREW	3
4	14-0455-1	ROCK AND ROLLER ASSY	1	33	14-0365	SPRING HEAVY	1
5	See part list A	SPRING R&ROLLER	1	34	150-010-223-7	M5X10 SCREW PH HD 13MM FLANGE NICK.	1
6	14-0411	DOWEL PIN WITH FLANGE	1	35	1050-242	M5 TENSILOCK NUT	2
7	14-0400	PIVOT ROD	1	36	See part list I	CUP LINER	1
8	5040-191	4MM "E" WASHER (DIN 6799) BLACK	2	37	14-0350	SPRING	1
9	150-012-700-1	M5X12 TENSILOCK BOLT YELLOW	2	38	14-0700	PLAS.COIN CUP FOR HOPPER	1
10	14-0070	WIPER	1	39	14-0080	INLET SLIDE	1
11	150-010-120	M5X10 SCREW PHILL. PAN HD YELLOW	4/6*	40	14-0335	SPRING LIGHT	4
12	1055-160	M5 WOODWASHER 5.5X18X2 YELLOW	2	41	14-0440	MOUNT	4
13	14-0416	BEARING PIN	4	42	1051-040	M5 EXT. STAR LOCKWASHER YELLOW	4
14	14-0590	BEARING 6X19X6MM	4	43	150-025-220	M5X25 SCREW PHILL. PAN HD YELLOW	4
15	150-012-420	M5X12 SCREW PHILL. FLAT HD YELLOW	4	44	22-0715	MICROSWITCH WITH ARM E1300H CHERRY	1
16	See part list B	HOPPER MOTOR 24VDC ECM	1	45	250-008-700-7	M5X8 BOLT HEX HD TAPT FLANGE YELLOW	10
17	14-0560-1	WHEEL HOUSING	1	46	14-0025	RIGHT SIDE MOUNTING BRACKET	1
18	150-025-700	M5X25 BOLT HEX HD YELLOW	1	47	14-0035	PIVOT BRACKET	1
19	1050-050	M5 NUT HEX YELLOW	1	48	235-020-220	M3.5X20 SCREW PH PAN HD TAPT YELLOW	2
20	140-008-420	M4X8 SCREW PHILL. FLAT HD YELLOW	2	49	14-0015	LEFTSIDE MOUNTING BRACKET	1
21	14-0095	COIN DEFLECTOR	1	50	240-008-700-7	M4X8 BOLT HEX HD TAPT FLANGE YELLOW	2
22	199-025-040	M10X25 SCREW HEX HD IMBUS YELLOW	1	51	14-0050-37	HANDLE 37MM	1
23	See part list C	HOPPER KNIFE	1	52	230-016-220	M3X16 SCREW PHILL. PAN HD TAPT YELLOW	2
24	See part list D	OUTLET COVER	1	53	1042-140	M4 WASHER 4.2X20X1.2 YELLOW	1
25	150-016-700-1	M5X16 TENSILOCK BOLT YELLOW	2	54	14-0005	PLATFORM BRACKET	1
26	14-0110	DRIVING HUB	1	55	14-0155	SPRING PLATE	2
27	See part list E	PIN WHEEL	1	56	22-0731-2	MICROSWITCH CHERRY 6.3MM FASTONS	1
28	14-0140	SPRING LINER	1	57	14-0045	SPRING MOUNT	1
29	See part list F	SHELF WHEEL	1	58	14-0330	HOPPER SPRING	1
30	14-0571	AGITATOR with BUSHINGS	1				

* With hopper liner

Min. mm	Max. mm	Part A Spring by Switch	Part B Hopper motor	Part C Knife	Part D Outlet Cover	Part E Pinwheel	Part F Shelf Wheel	Part G M.S.S. Wheel	Part H M5 Screw	Part I Cup liner
18.0	18.9	14-0370	14-0654-1310	14-0281	14-0065	14-0116	14-0130-1505	N.A.	150-020-931	N.A.
19.0	20.0	14-0370	14-0654-1310	14-0281	14-0065	14-0116	14-0130-1465	N.A.	150-020-931	N.A.
20.1	22.0	14-0370	14-0654-1310	14-0281	14-0065	14-0116	14-0130-1425	N.A.	150-020-931	N.A.
22.1	24.8	14-0370	14-0654-1310	14-0281	14-0065	14-0115	14-0130-1370	N.A.	150-020-931	N.A.
24.9	25.8	14-0370	14-0654-1310	14-0281	14-0065	14-0115	14-0130-1350	N.A.	150-020-931	N.A.
25.9	27.8	14-0370	14-0654-1310	14-0281	14-0065	14-0115	14-0130-1310	N.A.	150-020-931	N.A.
27.9	31.0	14-0370	14-0654-1310	14-0281	14-0066	14-0115	14-0130-1235	N.A.	150-020-931	14-0145
31.1	31.9	14-0370	14-0654-1310	14-0281	14-0066	14-0112	14-0130-1235	N.A.	150-020-931	14-0145
32.0	33.0	14-0370	14-0654-1310	14-0281	14-0066	14-0112	14-0130-1205	N.A.	150-020-931	14-0145
33.1	35.0	14-0340	14-0654-1230	14-0295	14-0067	14-0112	14-0130-1165	14-0580	150-025-522	14-0145
35.1	36.9	14-0340	14-0654-1230	14-0295	14-0067	14-0112	14-0130-1125	14-0580	150-025-522	14-0145
37.0	38.0	14-0340	14-0654-1230	14-0295	14-0067	14-0112	14-0130-1075	14-0580	150-025-522	14-0145



Gold Series

The standard for
The Gaming Industry

Specifications:

Coin size: diameter 18-40mm.

Bowl capacity: 1600 coins (US 0.25c).

Pay out speed:

24VDC motor - 450 coins per minute (US 0.25c).

110VAC motor - 350 coins per minute (US 0.25c).

240VAC motor - 350 coins per minute (US 0.25c).

Counting system: hall effect switch or microswitch.

Adjustable switch actuates when a pre-determined number of coins (by weight) is in the cup.

(Optional with strobe pins)

Optional: anti jam PCB for 24VDC motor.

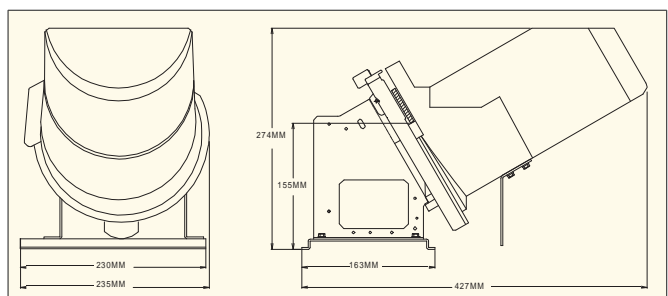
Optional: completely wired with AMP plug.

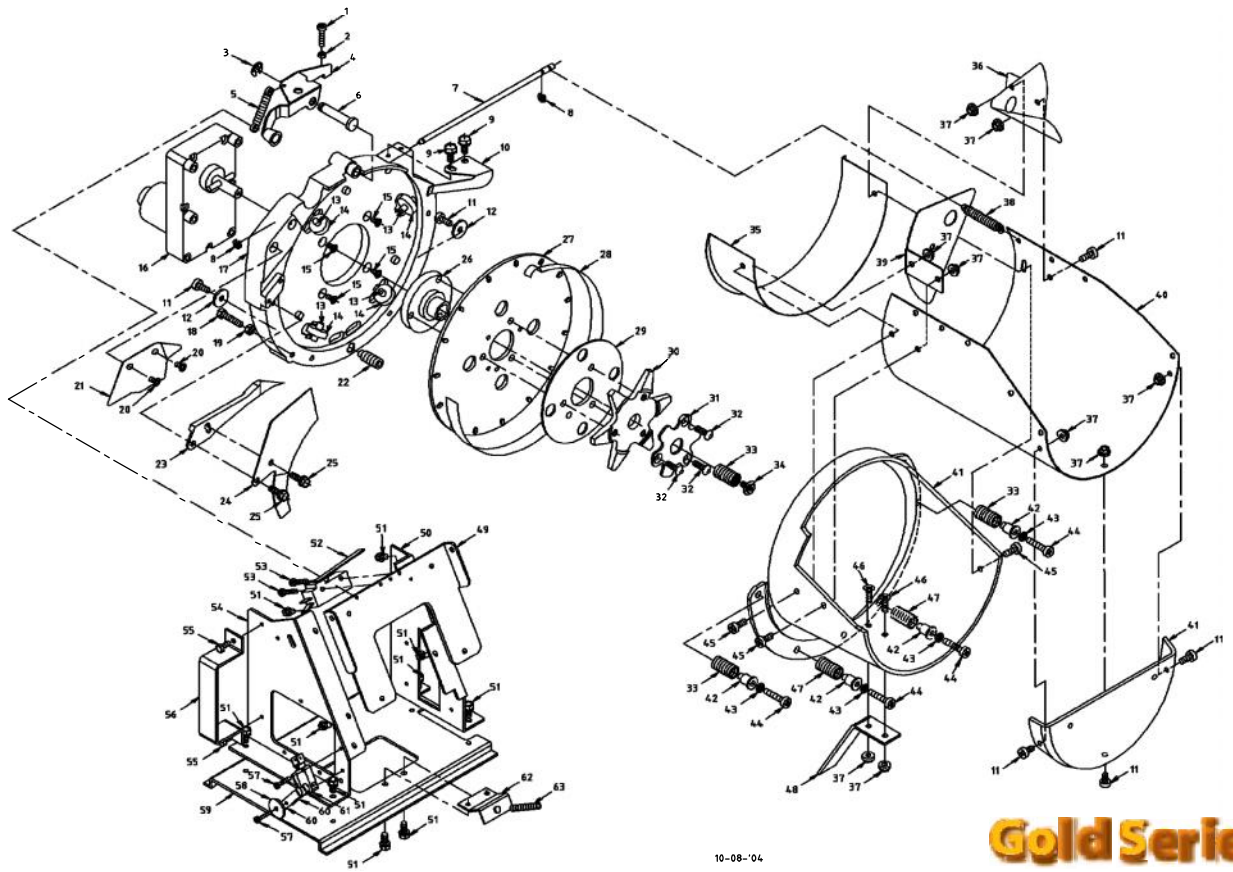
Extended Cup Hopper

Where higher capacity of coins / tokens is required our extended cup hopper offers the right solution.

Major manufacturers of casino equipment use this style successfully for years now.

Part no.	Description
15-7004-XX	Extended cup hopper 24VDC





10-08-'04

Gold Series

Exploded view extended cup hopper

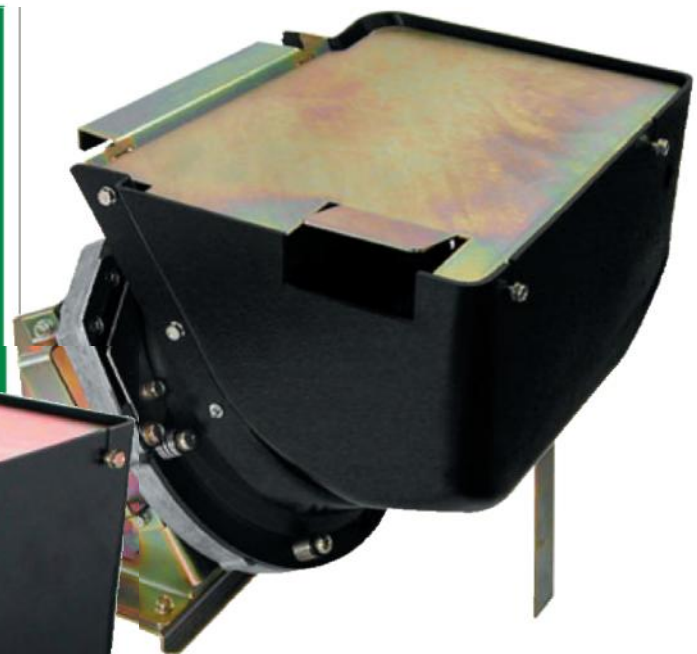
Drawing No.	Part No.	Description	Pcs	Drawing No.	Part No.	Description	Pcs
1	140-020-220	M4x20 SCREW PHILL. PAN HD YELLOW	1	32	See part list H	M5 SCREW	3
2	1040-050	M4 NUT YELLOW ZINC	1	33	14-0365	SPRING HEAVY	3
3	5070-181	7MM "E" WASHER (DIN 6799) BLACK	1	34	150-010-223-7	M5X10 SCREW PH HD 13MM FLANGE NICK.	1
4	14-0455-1	ROCK AND ROLLER ASSY	1	35	See part list I	CUP LINER	1
5	See part list A	SPRING R&ROLLER	1	36	14-0090	COIN BAFFLE WITH BEND	1
6	14-0411	DOWEL PIN	1	37	1050-242	M5 TENSILOCK NUT	9
7	14-0400	PIVOT ROD	1	38	14-0345	EXTENSION SPRING	1
8	5040-191	4MM "E" WASHER (DIN 6799) BLACK	2	39	14-0085	COIN BAFFLE	1
9	150-012-700-1	M5X12 TENSILOCK BOLT YELLOW	2	40	14-0880	SCOOP EXTENDER	1
10	14-0070	WIPER	1	41	14-0720	HOPPER CUP 2 PCS STANDARD	1
11	150-010-120	M5X10 SCREW PHILL. PAN HD YELLOW	6	42	14-0440	MOUNT	4
12	1055-160	M5 WOODWASHER 5.5X18X2 YELLOW	2	43	1051-040	M5 EXT. STAR LOCKWASHER YELLOW	4
13	14-0416	BEARING PIN	4	44	150-025-220	M5X25 SCREW PHILL. PAN HD YELLOW	4
14	14-0590	BEARING 6X19X6MM	4	45	150-012-120	M5X12 SCREW PHILL. PAN HD YELLOW	3
15	150-012-420	M5X12 SCREW PHILL.FLAT HD YELLOW	4	46	150-012-420	M5X12 SCREW PHILL. FLAT HD YELLOW	2
16	See part list B	HOPPER MOTOR 24VDC ECM	1	47	14-0335	SPRING	2
17	14-0560-1	WHEEL HOUSING	1	48	14-0075	SCOOP SUPPORT BRACKET	1
18	150-025-700	M5X25 BOLT HEX HD YELLOW	1	49	14-0035	PIVOT BRACKET	1
19	1050-050	M5 NUT HEX YELLOW	1	50	14-0025	RIGHT SIDE MOUNTING BRACKET	1
20	140-008-420	M4X8 SCREW PHILL. FLAT HD YELLOW	2	51	250-008-700-7	M5X8 BOLT HEX HD TAPT FLANGE YELLOW	10
21	14-0095	COIN DEFLECTOR	1	52	22-0715	MICROSWITCH WITH ARM E1300H CHERRY	1
22	199-025-040	M10X25 SCREW HEX HD IMBUS YELLOW	1	53	235-020-220	M3.5X20 SCREW PH PAN HD TAPT YELLOW	2
23	See part list C	HOPPER KNIFE	1	54	14-0015	LEFTSIDE MOUNTING BRACKET	1
24	See part list D	OUTLET COVER	1	55	240-008-700-7	M4X8 BOLT HEX HD TAPT FLANGE YELLOW	2
25	150-016-700-1	M5X16 TENSILOCK BOLT YELLOW	2	56	14-0050-37	HANDLE 37MM	1
26	14-0110	DRIVING HUB	1	57	230-016-220	M3X16 SCREW PHILL. PAN HD TAPT YELLOW	2
27	See part list E	PIN WHEEL	1	58	1042-140	M4 WASHER 4.2X20X1.2 YELLOW	1
28	14-0140	SPRING LINER	1	59	14-0005	PLATFORM BRACKET	1
29	See part list F	SHELF WHEEL	1	60	14-0155	SPRING PLATE	2
30	14-0571	AGITATOR with BUSHING	1	61	22-0731-2	MICROSWITCH CHERRY 6.3MM FASTONS	1
				62	14-0045	SPRING MOUNT	1
31	See part list G	METAL STAR SUPPORT AGITATOR	1	63	14-0355	COMPRESSION SPRING	1

Min. mm	Max. mm	Part A Spring by Switch	Part B Hopper motor	Part C Knife	Part D Outlet Cover	Part E Pinwheel	Part F Shelf Wheel	Part G M.S.S. Wheel	Part H M5 Screw	Part I Cup liner
18.0	18.9	14-0370	14-0654-1310	14-0281	14-0065	14-0116	14-0130-1505	N.A.	150-020-931	N.A.
19.0	20.0	14-0370	14-0654-1310	14-0281	14-0065	14-0116	14-0130-1465	N.A.	150-020-931	N.A.
20.1	22.0	14-0370	14-0654-1310	14-0281	14-0065	14-0116	14-0130-1425	N.A.	150-020-931	N.A.
22.1	24.8	14-0370	14-0654-1310	14-0281	14-0065	14-0115	14-0130-1370	N.A.	150-020-931	N.A.
24.9	25.8	14-0370	14-0654-1310	14-0281	14-0065	14-0115	14-0130-1350	N.A.	150-020-931	N.A.
25.9	27.8	14-0370	14-0654-1310	14-0281	14-0065	14-0115	14-0130-1310	N.A.	150-020-931	N.A.
27.9	31.0	14-0370	14-0654-1310	14-0281	14-0066	14-0115	14-0130-1235	N.A.	150-020-931	14-0145
31.1	31.9	14-0370	14-0654-1310	14-0281	14-0066	14-0112	14-0130-1235	N.A.	150-020-931	14-0145
32.0	33.0	14-0370	14-0654-1310	14-0281	14-0066	14-0112	14-0130-1205	N.A.	150-020-931	14-0145
33.1	35.0	14-0340	14-0654-1230	14-0295	14-0067	14-0112	14-0130-1165	14-0580	150-025-522	14-0145
35.1	36.9	14-0340	14-0654-1230	14-0295	14-0067	14-0112	14-0130-1125	14-0580	150-025-522	14-0145
37.0	38.0	14-0340	14-0654-1230	14-0295	14-0067	14-0112	14-0130-1075	14-0580	150-025-522	14-0145



Jumbo Cup Hoppers

With 2 versions of these cups we offer the choice in both capacity and measurements. Ideal for applications where bulk capacity of coins is required for large pay-out. Refills are reduced to a minimum.



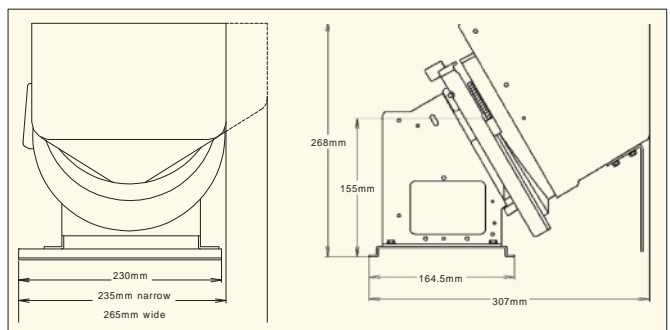
Gold Series

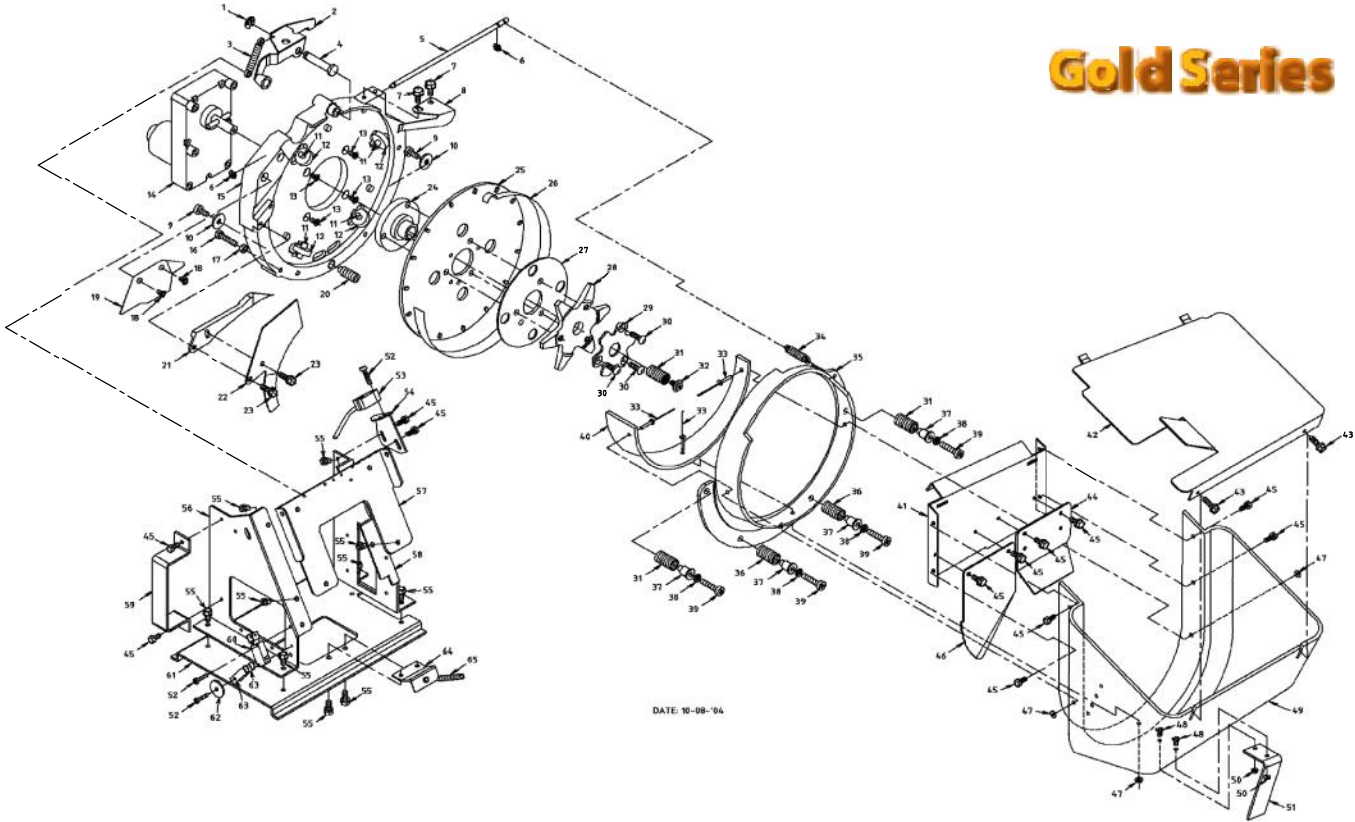
The standard for
The Gaming Industry

Specifications:

- Coin size: diameter 18-40mm.
- Bowl capacity: 2100 coins (US 0.25c).
- Pay out speed:
 - 24VDC motor - 450 coins per minute (US 0.25c).
 - 110VAC motor - 350 coins per minute (US 0.25c).
 - 240VAC motor - 350 coins per minute (US 0.25c).
- Counting system: hall effect switch or microswitch.
- Optional: anti jam PCB for 24VDC motor.
- Overflow protection: by microswitch. (Optional with strobe pins)
- Optional: completely wired with AMP plug.

Part no.	Description
15-4014-XX	Jumbo cup narrow hopper 24VDC
15-6014-XX	Jumbo cup wide hopper 24VDC



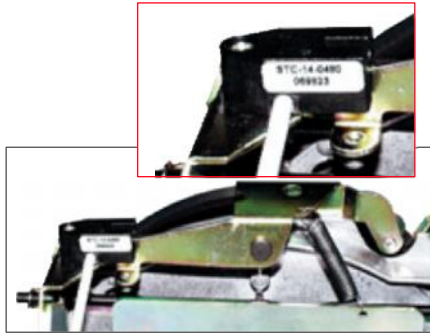


Exploded view jumbo cup hopper

Drawing No.	Part no.	Description	Pcs	Drawing No.	Part no.	Description	Pcs
1	5070-181	7MM E-WASHER (DIN 6799) BLACK	1	33	See part list I	BLINDRIVET STEEL 3.2	3
2	14-0455-1	ROCK AND ROLLER ASSY	1	34	14-0350	SPRING	1
3	See part list A	SPRING R&ROLLER	1	35	14-0720-4	CUP RING	1
4	14-0411	DOWEL PIN WITH FLANGE	1	36	14-0335	SPRING LIGHT	2
5	14-0400	PIVOT ROD	1	37	14-0440	MOUNT	4
6	5040-191	4MM "E" WASHER (DIN 6799) BLACK	2	38	1051-040	M5 EXT. STAR LOCKWASHER YELLOW	4
7	150-012-700-1	M5X12 TENSILOCK BOLT YELLOW	2	39	150-025-220	M5X25 SCREW PHILL. PAN HD YELLOW	4
8	14-0070	WIPER	1	40	See part list J	CUP LINER	1
9	150-010-120	M5X10 SCREW PHILL. PAN HD YELLOW	2	41	14-0830	WIPER COVER PLATE	1
10	1055-160	M5 WOODWASHER 5.5X18X2 YELLOW	2	42	14-0835-1	COVER PLATE NARROW	1
11	14-0416	BEARING PIN	4	43	240-010-700-7	M4X10 BOLT HEX HD TAPT FLANGE YELLOW	2
12	14-0590	BEARING 6X19X6MM	4	44	14-0840*	COIN REGULATOR PLATE	1
13	150-012-420	M5X12 SCREW PHILL. FLAT HD YELLOW	4	45	240-008-700-7	M4X8 BOLT HEX HD TAPT FLANGE YELLOW	12
14	See part list B	HOPPER MOTOR	1	46	See part list K	COIN BAFFLE	1
15	14-0560-1	WHEEL HOUSING	1	47	1030-002	M3 WASHER	3
16	150-025-700	M5X25 BOLT HEX HD YELLOW	1	48	140-010-420	M4X10 SCREW PHILL. FLAT HD YELLOW	2
17	1050-050	M5 NUT HEX YELLOW	1	49	14-0730-1	HOPPER CUP NARROW	1
18	140-008-420	M4X8 SCREW PHILL. FLAT HD YELLOW	2	50	1040-242	M4 TENSILOCK NUT	2
19	14-0095	COIN DEFLECTOR	1	51	14-0077	CUP SUPPORT BRACKET HIGH FRAME	1
20	199-025-040	M10X25 SCREW HEX HD IMBUS YELLOW	1	52	230-016-220	M3X16 SCREW PHILL. PAN HD YELLOW	3
21	See part list C	HOPPER KNIFE	1	53	14-0480	HALL SENSOR NPN N/O	1
22	See part list D	OUTLET COVER	1	54	14-0160	SENSOR BRACKET	1
23	150-016-700-1	M5X16 TENSILOCK BOLT YELLOW	2	55	250-008-700-7	M5X8 BOLT HEX HD TAPT FLANGE YELLOW	10
24	14-0110	DRIVING HUB	1	56	14-0015	LEFTSIDE MOUNTING BRACKET	1
25	See part list E	PIN WHEEL	1	57	14-0035	PIVOT BRACKET	1
26	14-0140	SPRING LINER	1	58	14-0025	RIGHT SIDE MOUNTING BRACKET	1
27	See part list F	SHELF WHEEL	1	59	14-0050-37	HANDLE 37MM	1
28	14-0571	AGITATOR with BUSHINGS	1	60	22-0731-2	MICROSWITCH CHERRY 6.3MM FASTONS	1
				61	14-0005	PLATFORM BRACKET	1
29	See part list G	METAL STAR SUPPORT AGITATOR	1	62	1042-140	M4 WASHER 4.2X20X1.2 YELLOW	1
30	See part list H	M5 SCREW	3	63	14-0155	SPRING PLATE	2
31	14-0365	SPRING	3	64	14-0045	SPRING MOUNT	1
32	150-010-223-7	M5X10 SCREW PH HD 13MM FLANGE NICK.	1	65	14-0355	COMPRESSION SPRING	1

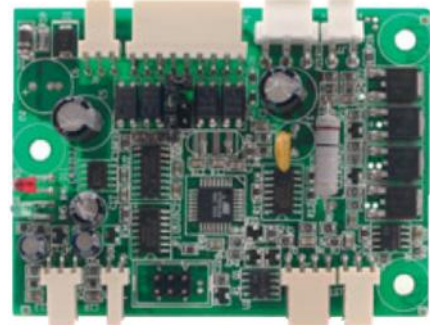
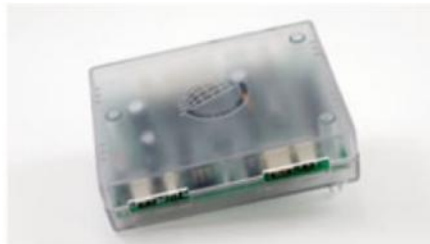
*Position see part list L

MIN mm	MAX. mm	Part A Spring by Sensor	Part B Hopper motor	Part C Hopper Knife	Part D Outlet Cover	Part E Pinwheel	Part F Shelfwheel	Part G M.S.S. Wheel	Part H M5 Screw	Part I Blindrivet 3.2	Part J Cup Liner	Part K Coin Baffle	Part L Coin reg. Plate
18.0	18.9	14-0375-5	14-0654-1310	14-0281	14-0065	14-0116	14-0130-1505	N.A.	150-020-931	032-010-909	N.A.	14-0845	Low
19.0	20.0	14-0375-5	14-0654-1310	14-0281	14-0065	14-0116	14-0130-1465	N.A.	150-020-931	032-010-909	N.A.	14-0845	Low
20.1	22.0	14-0375-5	14-0654-1310	14-0281	14-0065	14-0116	14-0130-1425	N.A.	150-020-931	032-010-909	N.A.	14-0845	Low
22.1	24.8	14-0375-5	14-0654-1310	14-0281	14-0065	14-0115	14-0130-1370	N.A.	150-020-931	032-010-909	N.A.	14-0845	Low
24.9	25.8	14-0375-5	14-0654-1310	14-0281	14-0065	14-0115	14-0130-1350	N.A.	150-020-931	032-010-909	N.A.	14-0845	Low
25.9	27.8	14-0375-5	14-0654-1310	14-0281	14-0065	14-0115	14-0130-1310	N.A.	150-020-931	032-010-909	N.A.	14-0845	Low
27.9	31.0	14-0375-5	14-0654-1310	14-0281	14-0067	14-0115	14-0130-1235	N.A.	150-020-931	032-012-909	14-0800	14-0850	High
31.1	31.9	14-0375-5	14-0654-1310	14-0281	14-0067	14-0112	14-0130-1235	N.A.	150-020-931	032-012-909	14-0800	14-0850	High
32.0	33.0	14-0375-5	14-0654-1230	14-0281	14-0067	14-0112	14-0130-1205	N.A.	150-020-931	032-012-909	14-0800	14-0850	High
33.1	35.0	14-0375-6	14-0654-1230	14-0295	14-0067	14-0112	14-0130-1165	14-0580	150-025-522	032-012-909	14-0800	14-0855	High
35.1	36.9	14-0375-6	14-0654-1230	14-0295	14-0067	14-0112	14-0130-1125	14-0580	150-025-522	032-012-909	14-0800	14-0855	High
37.0	38.0	14-0375-6	14-0654-1230	14-0295	14-0067	14-0112	14-0130-1075	14-0580	150-025-522	032-012-909	14-0800	14-0855	High



Hall Effect Sensor

Part no.	Description
14-0480	Hall effect sensor NPC n/o
14-0485	Hall effect sensor NPC n/c



Control Board for Casino Hopper

Features:

- MOSFET driven motor output
- Low level detection
- Anti-Jam function
- Motor protection
- Start input (optically isolated)
- Mode input (optically isolated)
- Inhibit output (optically isolated)
- Coin exit output (optically isolated)
- RS232 standard
- RS485 communication interface (optional)
- 24VDC power input

For more technical details, please ask for complete manual

Part no.	Description
14-0530	Hopper control board



Agitator Rubber

Part no.	Description
14-0571	Agitator



Pin Wheel

For STC Hopper.

Part no.	Description
14-0112	12 pin
14-0115	15 pin
14-0116	16 pin



Shelf Wheel

For STC Hopper.

Part no.	Size in mm
14-0130-1505	18 - 18.9
14-0130-1465	19 - 20
14-0130-1425	20.1 - 22
14-0130-1370	22.1 - 24.8
14-0130-1350	24.9 - 25.8
14-0130-1310	25.9 - 27.8
14-0130-1235	27.9 - 31
14-0130-1075	37 - 38
14-0130-1205	33
14-0130-1400	21 - 23.5



Cherry Micro Switch

Type: E13 - 15 Amp 110-220V.

For all STC hoppers.

Part no.	Description
22-0715	Microswitch



Rock & Roller Assy

Part no.	Description
14-0455-1	Rock & Roller assembly



DC Hopper Motor

For use on all STC hoppers.

Part no.	Description
14-0654-1310	24VDC 31 RPM
14-0654-1230	24VDC 23 RPM



Dc Hopper Motor

For use on 31RPM motor gear box assy.

Part no.	Description
14-0654	DC motor



Hopper Knife Steel

Part no.	Description
14-0295	Hopper knife steel



Hopper Knife Plastic with metal Inserts

Part no.	Description
14-0281	Hopper knife plastic