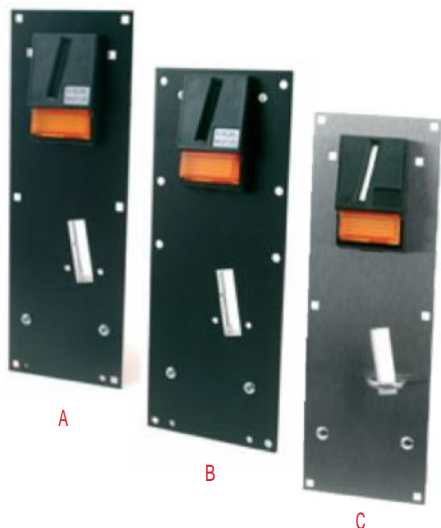


# Coin Validators

www.leisureherrero.com



MEI Frontplate Assemblies  
Types A, B and C

Part no.	Description
M7804	Frontplate Type A, size 77 x 233mm
M7805	Frontplate Type B, size 87 x 221mm
M7802	Frontplate Type C, size 77 x 233mm



MEI Basic  
Frontplate  
Assembly

Part no.	Description
M0078-19	MEI Basic fp



Front Entry Bezel

Part no.	Description
M33-11-0442	Entry bezel



Reject Button

Part no.	Description
M33-11-0248	Reject button

Top Clip



Part no.	Description
M33-11-0387	Top clip

Bottom Clip



Part no.	Description
M33-11-0264	Bottom clip

Reject Lever Spring



Part no.	Description
M49-04-0192	Reject lever spring



Euro DCE Bezel

Part no.	Description
M168368003	Euro DCE Bezel



Coin Cup Adaptor

Part no.	Description
M33-11-3368	Coin cup adaptor

No 6 x 5/16  
Coin Cup Screw



Part no.	Description
M17-11-0204	No 6 x 5/16 coin cup screw

Indirect Coin  
Entry Deck



Part no.	Description
M33-11-3457	Entry deck

## Parts for Cashflow Series



Cashflow  
Programming Module

Part no.	Description
M725934001	CPM



HII Adaptor  
& Loom

Part no.	Description
M727410001	HII Adaptor & loom



USB Cable  
Type A-B 2m Long

Part no.	Description
M149881002	USB Cable type A-B 2m long



CF95XX  
Hooked Coin Cup

Part no.	Description
M728513001	CF9520e Coin Acceptor (no separator)



CF95XX Yellow  
Reject Lever

Part no.	Description
M710586002	CF95XX Yellow reject lever



CF95XX Reject  
Cover Type A

For identification, see inside reject cover

Part no.	Description
M730717001	CF95XX reject cover type A
M730717002	CF95XX reject cover type B
M730717003	CF95XX reject cover type C

**USE OUR SERVICE!**  
All parts in one hand for  
low service cost

# Coin Validators

Parts for MS and ME Series

[www.leisureherrero.com](http://www.leisureherrero.com)



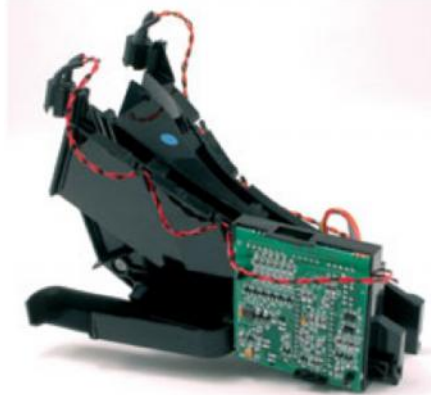
Validator Clip

Part no.	Description
M33-11-3782	Validator clip



Left Hand Manifold Clip

Part no.	Description
M150311001	Left hand manifold clip



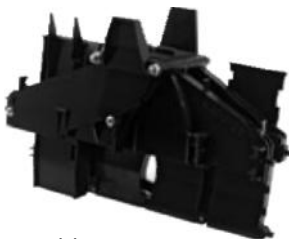
Standard Y-Chute

Part no.	Description
M72-03-3209	Standard Y-chute



Tube Collar Plate

Part no.	Description
M150719001	Tube collar plate



Long Short Manifold Assembly

Part no.	Description
M72-52-2925	Long short manifold assembly

Reject Lever Roller



Part no.	Description
M33-11-1707	Reject lever roller



Wear Pad

Part no.	Description
M33-11-0696	Wear pad



Chute Cover MK2 for MS126

Part no.	Description
M33-11-3318	Chute cover



Wear Plate

Part no.	Description
M28-13-0500	Wear plate



Entry Deck

Part no.	Description
M33-11-2151	Entry deck



Inscription Labels

For entry bezel M33-11-0442

Part no.	Description
M24-08-0144	Labels = 0.10, 0.20, 0.50, 1.00, 2.00
M24-08-0144-1	Labels 0.20, 1.00, 2.00
M24-08-0144-2	Labels 1.00, 2.00
M24-08-0144-3	Labels 0.20, 0.50, 1.00, 2.00

Entry Deck

Part no.	Description
M33-11-2876	Entry deck



Entry Deck

Part no.	Description
M33-11-0874	Entry deck



Entry Deck

Part no.	Description
M33-11-0882	Entry deck



Reject Cover for MARS MS and ME series Coin Acceptors

Part no.	Description
M72-52-2802	MK5-C+latch
M72-52-2797	MK5-A+latch
M72-52-2789	MK5-B+latch
M72-52-1741	MK3-A+latch
M72-52-1709	MK3-B
M72-52-1369	MK3-C+latch





## Coin Validator Europe RM5

By combining the extraordinary selectivity of multiple measurement sensors and the cloning system, the RM5 offers a reliable and extremely versatile product to meet the high demands of the market.

- Acceptance of 59 coins and/or tokens.
- Cloning feature.
- Acceptance speed of 3 coins/sec.
- Power-supply 12 - 24 VDC.
- Easy (re)programming feature via PC, handheld PC or Learn-Mode.
- Fully Equipped; various features already "on-board" like timer-function, Credit - bonus, etc.
- Communication via parallel, binary, serial, ccTalk or MDB protocols.
- Special tropicalised version available for outside use. (Carwash)

Part no.	Description
CRM5G00	Coin validator indirect reject
CRM5F00	Coin validator direct reject
CRM5G00CCT	Coin validator ccTalk indirect reject
CRM5F00CCT	Coin validator ccTalk direct reject
CRM5G00T	Coin validator indirect reject tropicalised
CRM5F00T	Coin validator direct reject tropicalised

ccTalk



## ccTalk Hub Board

- For easy wiring between peripherals and gaming board.
- Ensures correct data distribution between hoppers and coin validator.
- Can connect all basic components in ccTalk such as game board, coin validator, hoppers and power source.
- Extremely versatile because the use of different type of connectors to which it can be connected.
- Allows easy preparation of hopper addresses by simply moving the jumpers on the board.

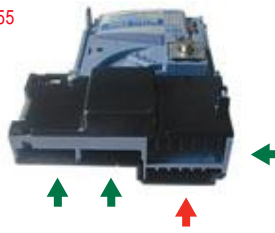
Part no.	Description
107-0225	ccTalk hub board



107-0350



107-0355



107-0360



## Separators

High speed separators with an exclusive mechanical anti-rebound coin system.

Part no.	Description
107-0350	Separator 3 sorting ways, front reject
107-0355	Separator 3 sorting ways plus reject placed in parallel
107-0360	Separator 3 in line sorting plus reject
62-0400	Frontplate separator vertical reject



Part no.	Description
CRMPCRHM5/TAR	Programmer kit RM5



## Display for RM5

- Indicates time or credits.

Part no.	Description
CRM924S	Display



## Price Power Supply

- To transfer coin acceptor signal to a relays signal.

Part no.	Description
CRM925-2-A	Power supply



For easy connection between coin acceptor, bill acceptor and ticket dispenser.

## Boards and Interfaces

Part no.	Description
CRM927	Interface board



## Front Plates

Part no.	Description
CRMF1	Mini front plate 119 x 63mm
CRMF6-8	Front plate 155 x 63mm grey
CRMF6-4	Front plate 155 x 63mm yellow
CRMF6-6	Front plate 155 x 63mm blue
CRMF6-9	Front plate 155 x 63mm white



## The "next generation" coin Xeptors® IDX X-10 and X-20



Part no.	Description
X1050	Teststand for Xeptor



Part no.	Description
X10199-1	Program loom RS232



Part no.	Description
X-16CABLE	Power loom for Teststand

The X-10 and X-20 set new world-class performance standards in both acceptance security and acceptance rate. The multi-coin acceptors can be programmed in the field and accept any of up to six coins or tokens, including the X- and Smart Mark® encoded tokens (X-10) and multi-metal (X-20) such as the €2.00. They accept and reject up to 24 coins per second. It's coin release lever with opening coin chute will make coin jams a pain in the past (reject). Xeptors® are the only coin acceptors designed to shed spilled liquid. The unique Personality Plugs allow one coin acceptor model to be plug compatible with all prevalent newer and older machines.

**Fast-fed coins will never be a problem with the IDX Xeptor®!!**

X-10 is especially designed for encoded tokens such as X-Mark® and Smart Mark®, the X-20 for acceptance of multi-metal coins.

### IDX Xeptor® Profits:

- Reject
- Multi-coin (6 channels)
- Acceptance 20 coins/sec
- free programm/diagnostic software
- Auto calibration
- Diameter measurement
- Multi-metal acceptance
- Multi-colour indicator LED for operational status and field diagnostics
- Credit pulse, Sense pulse, Tilt output, Inhibit input
- Optional diverter driver
- Optional security software (X-Key and X-tracker)

Part no.	Description
X10	Xeptor X10
X20	Xeptor X20



### X-Mark Tokens

X-Mark offers a second generation anti-counterfeiting token that stops slugging, shaving and crossplay in slot machines. The combination of X-Mark tokens and the X-10 optical recognition acceptor is a security system breakthrough for the gaming industry. The X-10 accept only when the code, metal and diameter are present and absolutely correct.



## Personality Plugs

Personality Plugs are small connector conversion modules about as big as the last segment of your little finger. With the Personality Plug installed in the Xeptor, retrofit installation does not require any machine connector re-wiring! The table below specifies which Personality Plug to use and the pin definitions of the connector.

Partnumber	PP16	PP16IC	PP40	PP46	PP62	PP3337	PIGTDC	PPSIGMA	PPCDS
Compatible	CC-16	CC-16DC	CC-40	CC-46	CC-62	CC-33 CC-37	CC-32/36 IC-32/36 IGT960	Sigma	CDS
Connector	JST-6	JST-6	JST-6	Molex-6	Molex-7	JST-3	Molex-6	Molex-7	JST-6
Pin 1	1K to Gr	Inhibit	-/Tilt	Inhibit	Ground	24vdcac	Inhibit	Ground	-/Tilt
Pin 2	Sense	Sense	Inhibit	-/Tilt	-/Sense	Sense	-/Sense	Sense	Inhibit
Pin 3	48vdcac	-	-/Credit	-/Credit	-/Tilt	Ground	-	-/Credit B	-/Credit
Pin 4	24vdcac	24vdcac	24vdcac	-/Sense	-/Credit	-	-	-/Credit A	24vdcac
Pin 5	12vdc	12vdc	12vdc	12vdc	Key Pin	-	12vdc	-	12vdc
Pin 6	Ground	Ground	Ground	Ground	12vdc	-	Ground	12vdc	Ground
Pin 7	-	-	-	-	Inhibit	-	-	Inhibit	-



Partnumber	PPNRI-6	PPNRI-3
Compatibility	NRI	NRI
Connector	10 pin IDC	10 pin IDC
Pin 1	Ground	Ground
Pin 2	12VDC	12VDC
Pin 3	Output5	-----
Pin 4	Output6	-----
Pin 5	Coin Return	-----
Pin 6	Inhibit	Inhibit
Pin 7	Output1	Output1
Pin 8	Output2	Output2
Pin 9	Output3	Output3
Pin 10	Output4	-----

## Chute Width Adaptors: more about coin sizes

In order for the Xeptors to accurately measure the diameter or read an X-Mark code, the coin must fall through a reasonably centered path in the coin chute. To accommodate centering of coins substantially a smaller than 1.47" in diameter, several sizes of "Chute Width Adaptors" may be optionally snapped into the side ribs of the fixed coin chute to narrow its width.



Part no.	Description	Max. Coin Diameter
ECX20-1	Chute width adaptor clear	32.5 - 34.3mm
ECX20-2	Chute width adaptor black	30.0 - 31.8mm
ECX20-3	Chute width adaptor orange	26.8 - 28.6mm
ECX20-4	Chute width adaptor yellow	23.6 - 25.3mm
ECX20-5	Chute width adaptor green	21.3 - 23.1mm
ECX20-6	Chute width adaptor blue	20.3 - 22.1mm
ECX20-7	Chute width adaptor purple	26.3 - 28.1mm
ECX20-A	Chute width adaptor black/orange	28.4 - 30.2mm
ECX20-B	Chute width adaptor yellow/green	22.4 - 24.1mm
ECX20-C	Chute width adaptor orange/green	24.3 - 26.0mm

## X-Key Security Key and X-Tracker

To increase the security on the Xeptors we supply optional the X-key and X-tracker. Once the Xeptor has been programmed with the X-key electronic security key connected, it becomes "secured" and in the future may only be programmed if the X-key again is electrically connected. The X-Tracker Management software for managing and tracking X-Key activity is based on Windows® and provides you an extra security on personnel management. The personnel ID and a time and date stamp are stored in an encrypted redundant file system on the PC and in the X-Key. Also the serial number of the Xeptor will be stored in both the X-Key and PC.



Part no.	Description
X-Key	Xeptor security key
X-Tracker	Security software





## C120 Coin Validator

The **120 Coin Validator** is a recognised standard within the leisure industry and certain niches of the gaming and vending industries. The C120 will accept up to 12 different coins from 15 to 31mm in diameter, and 1.5 to 3.3mm in thickness.

In addition to the standard C120 there are a number of versions in the range tailoring the functionality to the specific applications. C122 allows the host machine to inhibit individual coins, C123 has a dedicated line to send a signal to the host to set a 2 way sorter, C120 wake up which has an opto in the frontplate which will warn the host machine to power up the validator when a coin passes the opto and the C120E will send an early coin signal to the host machine in order to enable it to set the appropriate path.

### Features:

- 12 coin validator configured as 2 banks of 6 coins.
- Mechanically compatible with Amusement Industry standards.
- High level discrimination with high security options.
- Stringing is reduced via the use of an extremely high cotton cutter.
- Individual coin inhibit switches.

Powersupply requirements: 11V-28V DC.

Current consumption: typically: 50mA, maximum 300mA.

Part no.	Description
C120*	Coin validator body
C120FD*	Validator and frontplate

\* specify coins



## Condor Coin Validator

The **Condor** range of electronic coin acceptors has been specifically designed for the Casino slot machine industry.

With advanced discrimination techniques, the Condor Plus is a secure, high-speed coin and token acceptor designed specifically for the international gaming market. Using factory-quality coin specification data to obtain the highest level of coin discrimination, Condor Plus accepts up to twelve different coins or tokens from 15-44.5mm in diameter and 1.5 – 3.75mm in thickness and can handle up to ten coins or tokens per second.

### Features:

- Fast acceptance – up to 10 coins per second.
- Flexibility to provide secure single and true multi-coin acceptance – coins and tokens.
- Field-programming with factory-quality coin specification data using ccProgrammer.
- Wide range of functions, including coin acceptance, can be customised or factory-set to meet jurisdictional requirements.
- Multiple precision optical sensors for advanced coin discrimination.
- ccTalk serial interface and casino standard parallel interfaces.
- Teach and RunTM on all windows.
- Comprehensive diagnostics and alarm reporting via ccTalk.

Part no.	Description
CN1*	Condor single coin acceptor
CN1R*	Condor single coin acceptor reverse
CN3*	Condor multiple coin/credit acceptor
CN3R*	Condor multiple coin/credit acceptor reverse
CN4*	Condor multiple coin/credit acceptor
CN4R*	Condor multiple coin/credit acceptor reverse

\* specify coins



## SR3 Coin Validator

The SR3 is compatible with most 3.5" (89mm) acceptors currently used in virtually all applications. It can be programmed on site without the use of coins via a PC-based ccProgrammer, ccTeach or ccEuroTeach, to create factory-quality coin signatures.

The Teach and Run™ function allows local reprogramming with coins or tokens, but performance is dependent on the coins used and is recommended only as a 'quick fix'. Up to twelve different coins ranging from 15mm to 32mm in diameter can be accepted, with an option to have a built-in totaliser.

### Features:

- Factory-quality coinless programming.
- ccTalk serial and parallel interfaces.
- True 12 coin acceptance.
- Customisable bank configuration (CBC) – any permutation via ccTalk serial.
- Two banks of 6 coin windows via parallel.
- European industry standard body size 3.5" x 4.0" (89mm x 102mm).
- Teach and Run™ on all windows.
- Multiple applications, including high-security
- Suite of programming tools (PC-based ccProgrammer, ccTeach or ccEuroTeach).
- Individual coin inhibit.
- Diagnostics and alarm reporting.

### Options:

- 12-coin binary parallel or simple parallel interface.
- MechTool™ for reconfiguration in situ.
- Totaliser.
- Choice of accept/reject paths via standard body, reverse body or front plate versions.
- Range of front plates, rundowns and bezels
- Range of mounting options.
- Sorter driver.

Part no.	Description
SR3F	SR3 Coin validator frontplate version
SR3	SR3 Coin validator standard body
SR3R	SR3 Coin validator standard body reverse

## Oval Entry Bezel

- For use with SR5i.
- Available in a wide range of solid and translucent materials.
- Available with bulb illuminations, through standard 5mm bulb holder.

Part no.	Description
CC5511	Oval entry bezel



## SR5i Coin Validator

The SR5i offers a breakthrough in true coin acceptance and security. Thanks to its intelligent expert system, Acceptelligence™ the SR5i offers an exceptional level of first time acceptance and security levels resulting in exceptional fraud rejection. The SR5i supports remote programming to allow rapid reaction to fraud and to simplify the introduction of a new coin by allowing new coin specifications and other coin programming to be downloaded via a connected host.

### Features:

- New sensor technology based on an expert system, offering the highest first time accept rate combined with rapid sensitivity to fraud attack.
- Remote download capability.
- Remote factory-quality coinless programming and diagnostics via host machine.
- Encrypted communication protocol.
- True 16 coin/token acceptance.
- ccTalk serial interface or parallel interface.

### Options:

- 16-coin binary parallel or simple parallel interface.
- MechTool™ for reconfiguration in situ.
- Integral sorter with manifold (4-way) or active manifold (8-way).
- Top or front coin-entry.
- Direct (front plate) or indirect reject paths.
- Range of front plates, rundowns and bezels.
- Range of mounting options.

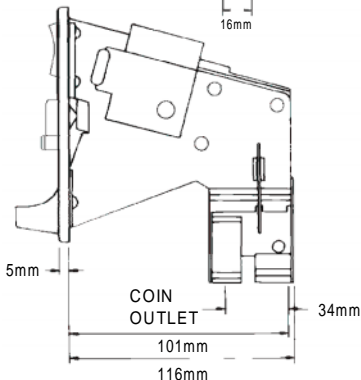
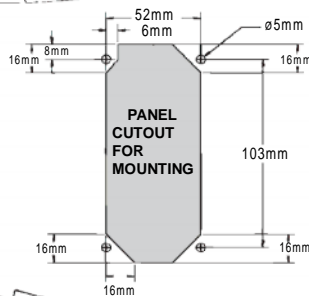
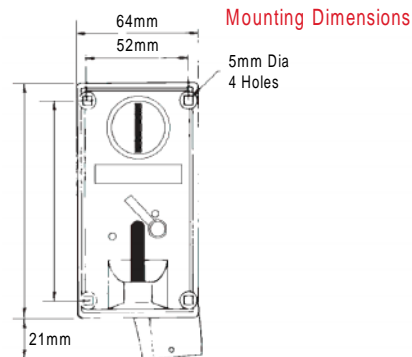
Part no.	Description
SR5iFI	SR5i Coin validator front entry / indirect reject
SR5iFD	SR5i Coin validator front entry / direct reject
SR5iTI	SR5i Coin validator top entry / indirect reject
SR5iTD	SR5i Coin validator top entry / direct reject

# Coin Acceptors



Electronic Roll Down Acceptor with Reject Lever

- To change the coin you wish to accept, simply lift up the retaining bracket and insert new sample coin and the mech. will accept only that coin
- Accepts coins based on the coins diameter size, thickness and material content
- Capable of accepting a wide variety of coins and tokens: Coin Dia. Size: 18 mm to 31 mm  
Coin Thickness: 1.2 mm to 3.0 mm
- 3-way adjustable timing switch for coin output 22 ms/ 45 ms/65 ms
- Adjustable sensitivity to eliminate acceptance of high quality slugs
- Easy installation
- Requires +12vdc
- Mounting bolts included



Part no.	Description
H40-1500-01	Electronic roll down acceptor with reject lever



Frontplate Coin Acceptor Type S1 and SS1

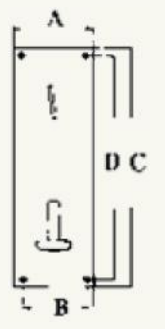
- Available for all coins from 17 up to 30mm (Euro included ).
- Washer catch.
- Reject button and reject outlet.
- Bounce resistant coin micro switch.
- Anti stringing protection.

**Size type S1:**

- A 63.5mm
- B 51mm
- C 115mm
- D 102mm

**Size type SS1:**

- A 50mm
- B 40mm
- C 150mm
- D 140mm



Part no.	Description
S1-XX	Coin acceptor
SS1-XX	Coin acceptor

-XX Specify coin



Frontplate Coin Acceptor

- Available for Euro coins 0.10, 0.20, 0.50, 1.00 and 2.00. (Not available in US)
- Frontplate size 60 x 152mm.

Part no.	Description
107-0021	Frontplate coin acceptor 0.10
107-0022	Frontplate coin acceptor 0.20
107-0023	Frontplate coin acceptor 0.50
107-0024	Frontplate coin acceptor 1.00
107-0025	Frontplate coin acceptor 2.00



Electronic Coin Equalizer

Simple upgrade from the older generation of mechanical coin mechanisms without their inherent problems of coin jams and wearing parts. Available at a price that makes conversion economically attractive.

- Solid state electronic circuit designed to compare the "characteristic" of incoming coin to sample coin.
- "Slide action" sensor coil assembly allows for quick sample coin change.
- High reliability.
- Will retrofit most mechanical 3.1/2" acceptors
- Standard voltage of 12 - 24 - 50VAC or VDC.
- Electronic circuit determines coins material composition, thickness and diameter.
- Potentiometer adjustable for "weeding-out" slugs. Rejects coin automatically when power is off.
- "Free-fall" acceptance for accurate quick-feeding.
- Credit output signal, which eliminates the need for a microswitch assembly.
- Built in lock-out coil, which eliminates the coin-in no credit potential.
- Not suitable for 1 and 2 Euro .

Part no.	Description
CE100	Coin equalizer



Coin Entry

- Heavy-duty die cast.
- Chrome plated.
- Adjustable entry size: 25.4mm - 34.3mm.
- Available with or without plunger.

Part no.	Description
107-0035	Coin entry without plunger 30° angle
107-0040	Coin entry with plunger 30° angle



Back Channel Assembly

- Universal metal back channel assembly.
- Will fit all 3-1/2" coin mechs.

Part no.	Description
107-0030	Back channel assembly

# Coin Acceptors



## Single Coin Rejector

This precision built, mechanical single coin mechanism is pre-adjusted for all coin/tokens in the range 17mm up to 30mm diameter, to ensure jam free checking and high selectivity.

### Features:

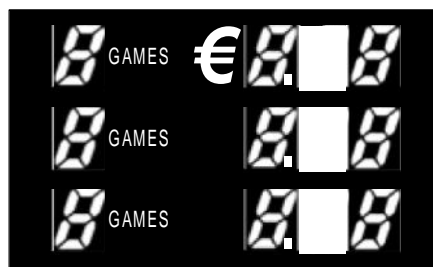
- Compatible with International Standard.
- Metal content check.
- Washer catcher.
- Thickness, diameter, weight and rim test.
- Anti strimmer protection (no fishing)
- Size: 102mm x 89mm.

(This model is not available in the US)



This coin mechanism is available for:  
0.10 - 0.20 - 0.50 - 1 & 2 Euro

Part no.	Description
107-0001	Coin mechanism 0.10
107-0002	Coin mechanism 0.20
107-0003	Coin mechanism 0.50
107-0004	Coin mechanism 1.00
107-0005	Coin mechanism 2.00



## Re-Usable Price of Game Labels White on Black

- Easy create your own price of game with a black marker.
- Sold in sheets of 10 stickers.

Part no.	Description
23-0090	Price labels



## 3 1/2" Single Coin Mech

This mechanical single coin mechanism is available for all coin/tokens from 18 up to 30mm diameter.

### Features:

- Compatible with International Standards.
- Metal content check.
- Washer catcher.
- Thickness, diameter, weight and rim test.
- Anti strimmer protection (no fishing).
- Each mech fully tested and inspected.
- Size: 102 X 89mm.

Part no.	Description
61-10XX*	Acceptor

\* Specify coinage



## Rejector Mounting Studs

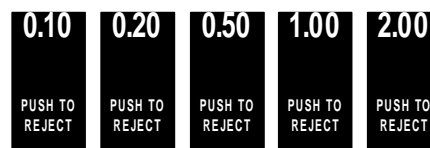
For G06 and G07 Series.

Part no.	Description
C10-21	7mm long



## Mounting Screw

Part no.	Description
C11-22	Mounting screw



## Inscription Label

For C11-13 reject button.

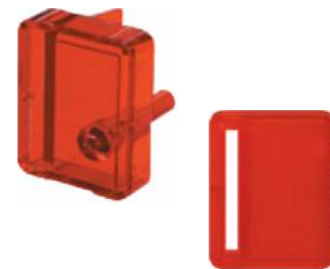
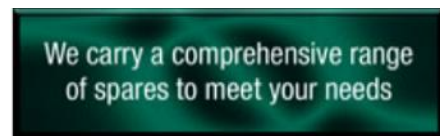
Part no.	Description
C11-13E0.10	Label 0.10
C11-13E0.20	Label 0.20
C11-13E0.50	Label 0.50
C11-13E1	Label 1.00
C11-13E2	Label 2.00

More inscriptions available



€ 0.10	€ 0.20
€ 0.50	€ 1.00
€ 2.00	Size: 40 x 40mm

Part no.	Description
23-0091-010	Price labels 0.10
23-0091-020	Price labels 0.20
23-0091-050	Price labels 0.50
23-0091-100	Price labels 1.00
23-0091-200	Price labels 2.00

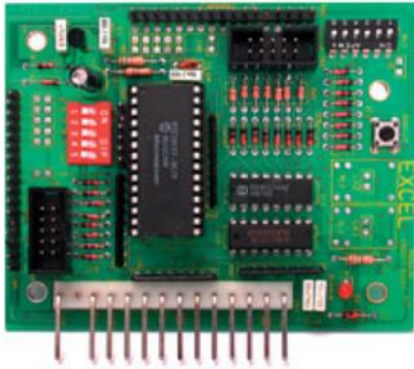


## Reject Button + Cover

- Available in three coin sizes.
- Use together with button.

Part no.	Description
C11-13	Rejector button

Part no.	Description
C11-13-23	Cover up to 23.5mm
C11-13-25	Cover up to 25mm
C11-13-29	Cover up to 29mm

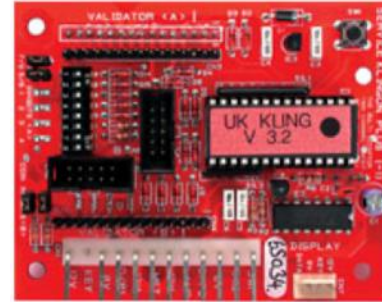


## Excel Credit Board

The Excel Credit Board is bi-directional, sending signals to, as well as reading from the coin validator connected to it.

- Multi acceptance, can work with almost any coin acceptor on the market.
- Bi-directional reading and outputs: Is able to dynamically control acceptance and binary/parallel operation.  
Once the binary operation has been selected with dipswitches the microprocessor then places the validator in the correct operating mode.
- Load's of 'POP's, 32 different price of play options.
- Free play, Excel can turn off the validator to give free games for promotions.
- Game metering, by very high play pulsing 30/50 times per game the meters can become unreliable.  
A hardware option allows the metering to operate per game or coin unit reducing meter pulses considerably.
- Relay output, normally supplied as standard with transistor but easy to change to relays.
- Modular, Excel can also work with optional dual display.

Part no.	Description
22-2262-1	Excel credit board



## Klingon-Plus Credit Board

The Klingon-Plus upgrade is primarily for use with Money-Controls, C120 and C220 validators, and allows the £2.00 coin to correctly register on both A and B channels.

Part no.	Description
E7000	Klingon-plus credit board



## DM Kent Credit Board

- Connects directly to Mars CF, ME, MS and Money Controls C220 series coin acceptors.
- Drives credit machines such as card dispensers, cranes, video and arcade games in credit pulse output mode with full machine handshake.
- Can directly drive ticket/token/coin dispensers.
- Supports coinmechanism anti-stripping protection.
- Bonus table resets 25 seconds after last coin is entered.
- Common ground coin acceptor technique for max. flexibility.

Part no.	Description
22-2260	DM Kent credit board



## Percentage Key

Part no.	Description
22-0829	Percentage key



## Stakes and Prices Key

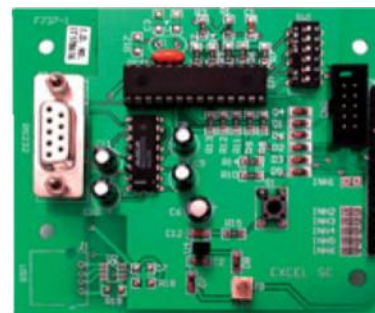
Part no.	Description
22-0828	Stakes and prices key



## Interface Loom

To connect the Excel Credit Board to Mars or Money Controls Validators.

Part no.	Description
22-2262-100-15	Interface loom for Money Controls
22-2262-100-17	Interface loom for Mars



## Coin Acceptor / PC Interface

- Allows easy interfacing between PC, coin acceptor and hoppers.
- Interface with 'netstop' using GBA-RS232 protocol. (USB optional)
- DIP switch setting for relevant coin mechs.
- Service button for test.

Part no.	Description
107-0011-1	Coin acceptor / PC interface